

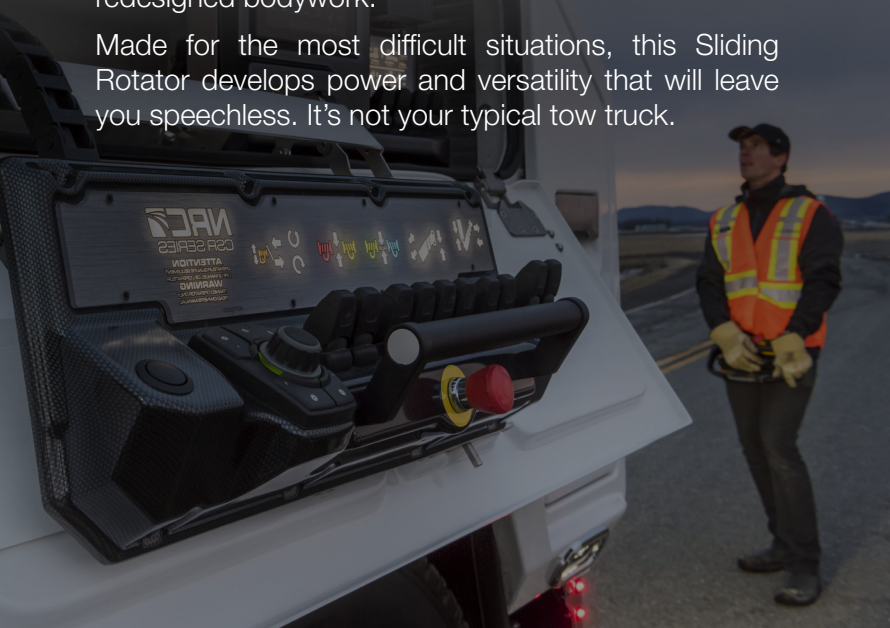
WRECKER

CSR65

Several years of development were necessary to create a whole new DNA of towing equipment.

25% additional storage space, more rigid structure, quick release underlift hydraulic connections, retractable control panel, access panel for stabilizer pads and several other new features complete the CSR series. It stands out from the crowd with its completely redesigned bodywork.

Made for the most difficult situations, this Sliding Rotator develops power and versatility that will leave you speechless. It's not your typical tow truck.



WRECKER SPECIFICATIONS

- 65-ton hydraulic sliding-rotating wrecker boom
- Dual 50,000 lbs 2-speed planetary winches
- Average body weight : 45,000 lbs
- 101,5" wide heavy duty body

BOOM SPECIFICATIONS

- V-shaped 3-stage telescopic boom
- Boom structural rating fully retracted: 130,000 lbs
- Boom structural rating fully extended: 47,000 lbs
- 50-ton lifting capacity (with 25% safety factor)
- Reach past tailgate: 373"
- Maximum Boom working height: 526"
- Range of elevation: 0° - 70°
- 360° sheave head
- D-rings on each boom sections

MINIMUM FRAME REQUIREMENTS

- Front Axle: Minimum 20,000 lbs capacity
- Rear Axle: Minimum 66,000 lbs capacity
- Minimum frame RBM: 4,500,000 in.lbs
- Minimum CLA: 246"
(from cab to center of rearmost axle)



65 TONS



50,000 LBS



373"



NETRUCKCENTER.COM

Sales: (603) 658-7171

Service: (603) 778-8158