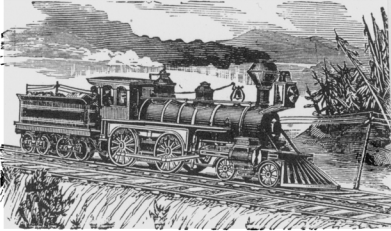
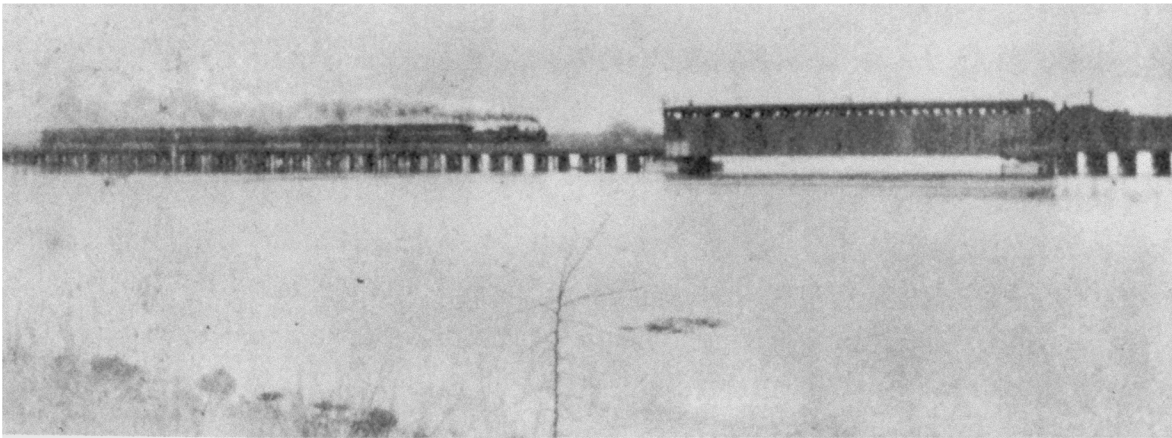
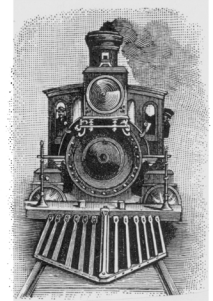


Railroads

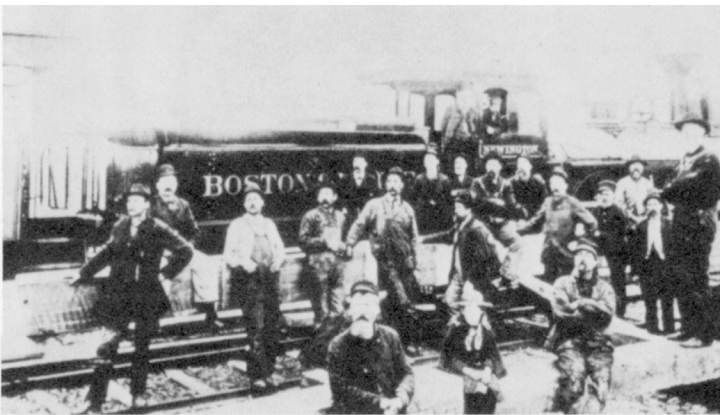
In order to deliver supplies to his Portsmouth breweries, Frank Jones and his partners were involved in several railroads including the Boston & Maine and the Portsmouth & Dover Railroads ("P&D RR"). Ground breaking for the P&D RR occurred November 25, 1872 in Dover. The railroad had been a dream for over 20 years after the Piscataqua Bridge from Fox Point in Newington to Durham had been taken out by ice floes in the early 1850s.



The Piscataqua River Bridge was constructed downstream and spanned the river from Hilton Point in Dover to Bloody Point in Newington. A new Railroad Station was also built. The truss of the Piscataqua River railroad bridge was put into position on December 18, 1873 using two schooners to float it and two tugs for power. It was 200 feet long, 40 feet wide and 25 feet high. The first engine came over the road December 21, 1873. The road was formally opened to public travel February 9, 1874. Miss Emma Bean of Newington was the first to cross it.



Little Bay Bridge for carriages and railroad



Boston & Maine locomotives frequently bore names and this old woodburner was named "Newington."

